

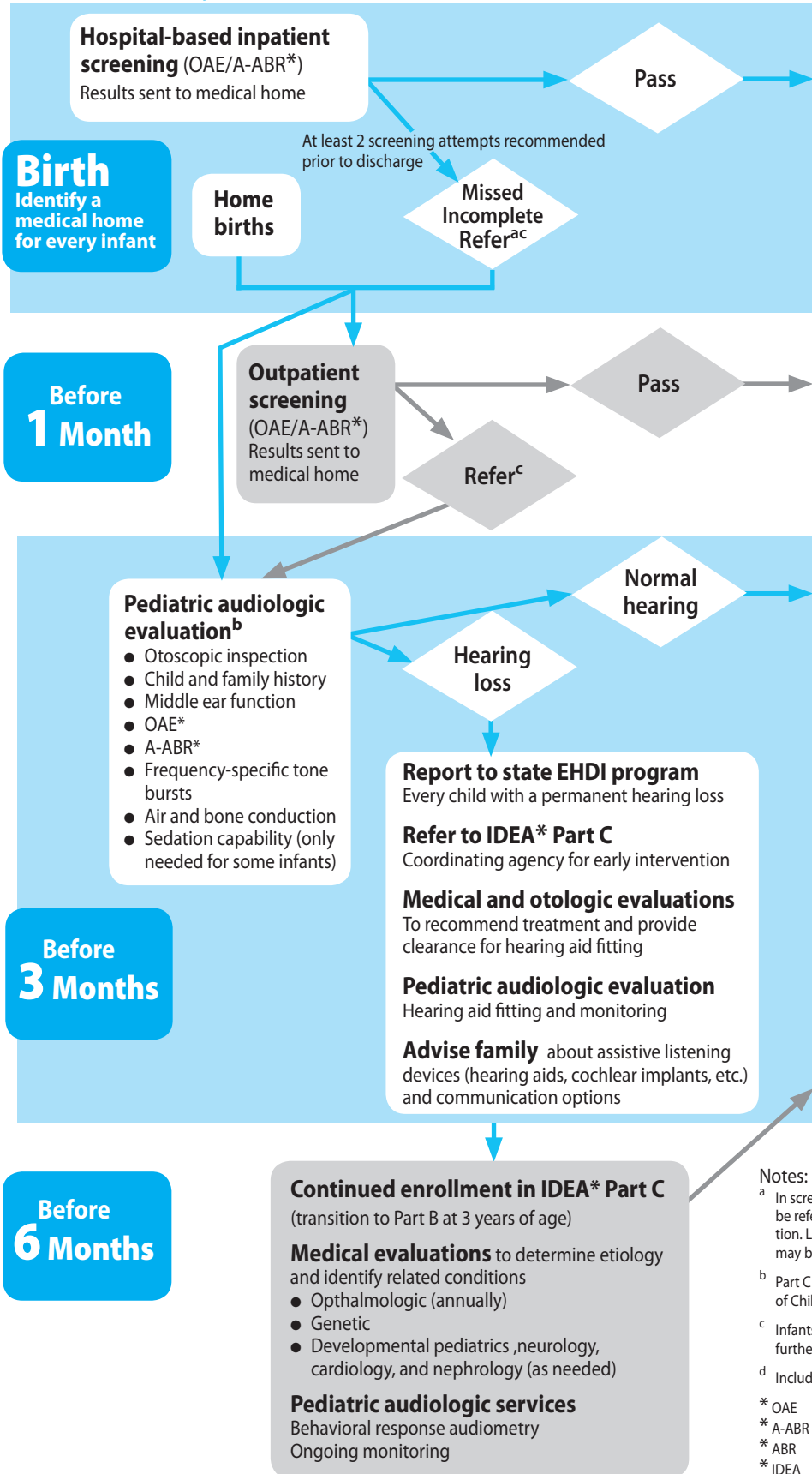


# Universal Newborn Hearing Screening, Diagnosis, and Intervention

## Guidelines for Pediatric Medical Home Providers

### Ongoing care of all infants<sup>d</sup> from medical home provider

- Provide parents with information about hearing, speech, and language milestones
- Identify and aggressively treat middle ear disease
- Provide vision screening and referral as needed
- Provide ongoing developmental surveillance and referral to appropriate resources
- Identify and refer for audiologic monitoring infants who have the following risk indicators for late-onset hearing loss:
  - ◆ Parental or caregiver concern about hearing, speech, language, developmental delay
  - ◆ Family history of permanent childhood hearing loss
  - ◆ Stigmata or other findings associated with a syndrome known to include a sensorineural or conductive hearing loss or Eustachian tube dysfunction
  - ◆ Postnatal infections associated with sensorineural hearing loss, including bacterial meningitis
  - ◆ In utero infections such as cytomegalovirus, herpes, rubella, syphilis, toxoplasmosis
  - ◆ Neonatal indicators, specifically hyperbilirubinemia at a serum level requiring exchange transfusion, persistent pulmonary hypertension of the newborn associated with mechanical ventilation, and conditions requiring the use of extracorporeal membrane oxygenations
  - ◆ Syndromes associated with progressive hearing loss, such as neurofibromatosis, osteopetrosis, Usher syndrome
  - ◆ Neurodegenerative disorders, such as Hunter syndrome, or sensorimotor neuropathies, such as Friedreich's ataxia and Charcot-Marie-Tooth disease
  - ◆ Head trauma
  - ◆ Recurrent or persistent otitis media with effusion for at least 3 months



#### Notes:

<sup>a</sup> In screening programs that do not provide outpatient screening, infants will be referred directly from inpatient screening to pediatric audiologic evaluation. Likewise, infants at higher risk for hearing loss, or loss to follow-up, also may be referred directly for pediatric audiologic evaluation.

<sup>b</sup> Part C of IDEA\* may provide diagnostic audiologic evaluation services as part of Child Find activities.

<sup>c</sup> Infants who fail the screening in one or both ears should be referred for further screening or pediatric audiologic evaluation.

<sup>d</sup> Includes infants whose parents refused initial or follow-up hearing screening.

\* OAE Otoacoustic emissions

\* A-ABR Automated auditory brainstem response

\* ABR Auditory brainstem response

\* IDEA Individuals with Disabilities Education Act